

Moondani: 1930s Period Brilliance in an Incredible Location!

3 1 2

Graced with elegant 1930s original character over a single level and boasting a stunning Camberwell location close to renowned schools and Highfield Park, this heartwarming 3 bedroom residence is a gorgeous period prize that is definitely worth fighting for.

Thoughtfully cared for over the years and offering wonderful high ceilings along with an array of other striking classic features, this amazing property has so much going for it! A generous lounge promises views of the landscaped front garden along with a recently installed ambient gas log fireplace to keep you warm in the winter months. This welcoming living zone further flows into an inviting dining room perfect for both casual and formal meals.

6 Dominic Street

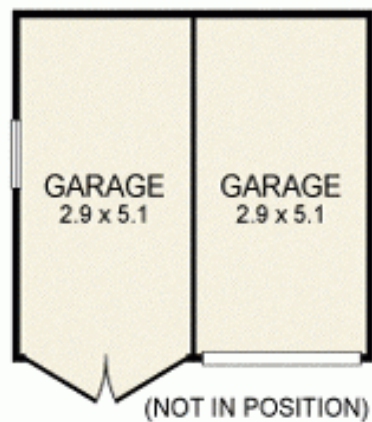
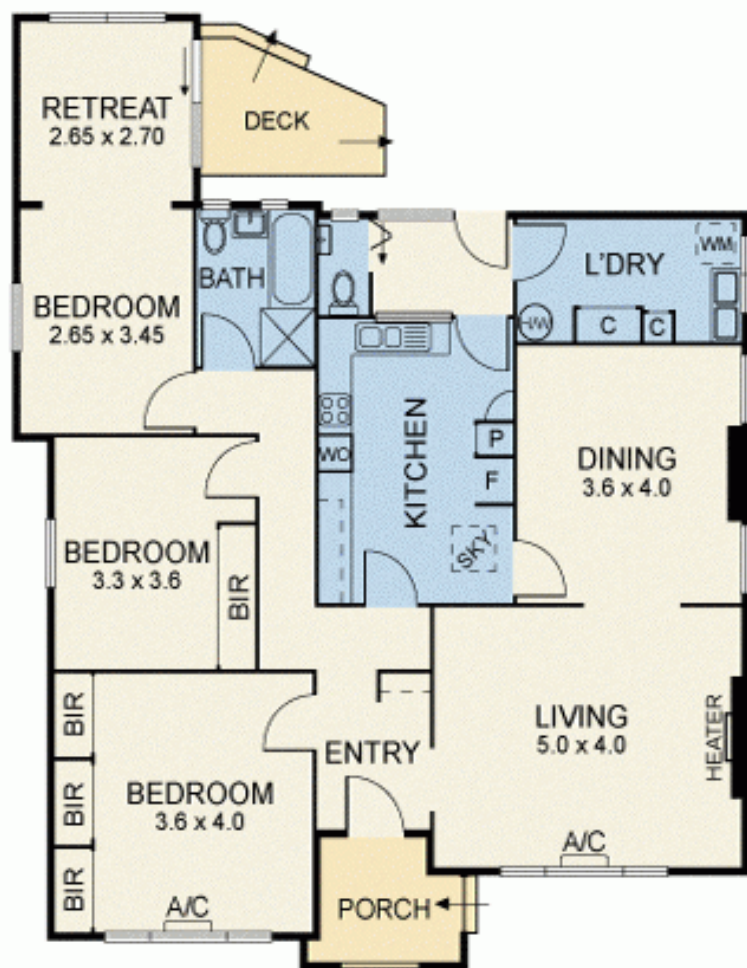


> Paul Richards

Phone :0398152999

Mobile :0414503324

Email :paul@bekdonrichards.com.au



Disclaimer: The artist impressions and floorplans are indicative only, are not to scale and do not form part of any Contract of Sale. Any dimensions, finishes or specifications depicted are subject to change without notice. Consultants and agents do not warrant the accuracy of any information provided and do not accept any liability for negligence, any error, misrepresentation, discrepancy in the information or reliance thereon.