



Space and privacy for a growing family

3 2 1

Set amidst manicured landscaped gardens, this elevated brick family home presents plenty of space for a growing family, with classic contemporary styling and private outdoor space. Located within easy walking distance of Coburg West Primary School and Coburg Station, the home is also just moments from lush Merri Creek parklands, Coburg High and local village shopping and cafes.

Awash with natural light, an expansive open plan living and dining room is adjacent to a spacious modern kitchen with stainless steel gas appliances and ample storage, overlooking a leafy low maintenance established back garden and family friendly lawn. The home's upper level comprises three generous carpet bedrooms, including an ensuite master bedroom with walk-in wardrobe, alongside a contemporary central bathroom with separate bathtub.
134 Shaftsbury Street



> Paul Richards

Phone :0398152999

Mobile :0414503324

Email :paul@bekdonrichards.com.au

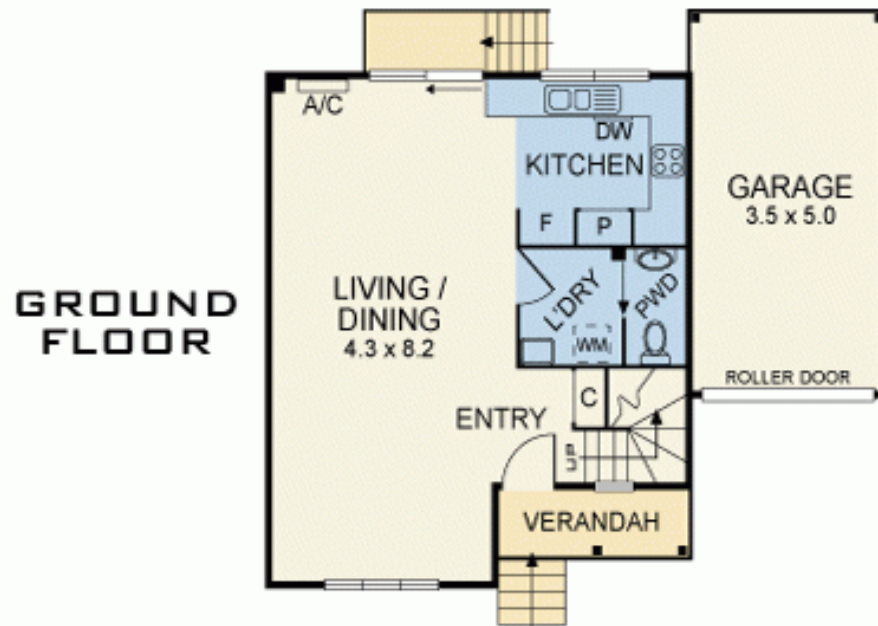
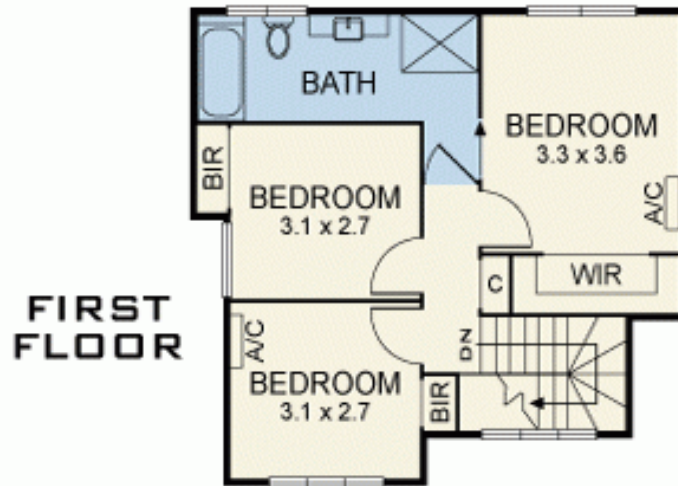


> John Ke

Phone :0398152999

Mobile :0410888737

Email :john@bekdonrichards.com.au



Disclaimer: The artist impressions and floorplans are indicative only, are not to scale and do not form part of any Contract of Sale. Any dimensions, finishes or specifications depicted are subject to change without notice. Consultants and agents do not warrant the accuracy of any information provided and do not accept any liability for negligence, any error, misrepresentation, discrepancy in the information or reliance thereon.

134 SHAFTSBURY STREET, COBURG

BEKDON RICHARDS