



Boutique elegance in the heart of Hawthorn

3 3 2

Exuding elegance and charisma with an impeccable European inspired facade, this private and secure two storey townhouse presents light filled living spaces and an expansive courtyard garden. Superbly located just moments from trams, leafy Fritsch Holzer Park and a vibrant local caf precinct, the residence presents an exceptional opportunity for those looking to downsize without compromise, or as a fantastic entry to a prestige neighbourhood.

Flooded with natural light, an airy living room flows directly out to a spacious private courtyard terrace framed by established low maintenance garden beds, while a decorative bay window leads to dining space, which also opens out to the courtyard for flexible year-round entertaining. Adjacent, a stylish modern kitchen comprises stainless steel gas appliances, an island benchtop, breakfast bar and chic stainless steel splashback.



> Paul Richards

Phone :0398152999

Mobile :0414503324

Email :paul@bekdonrichards.com.au

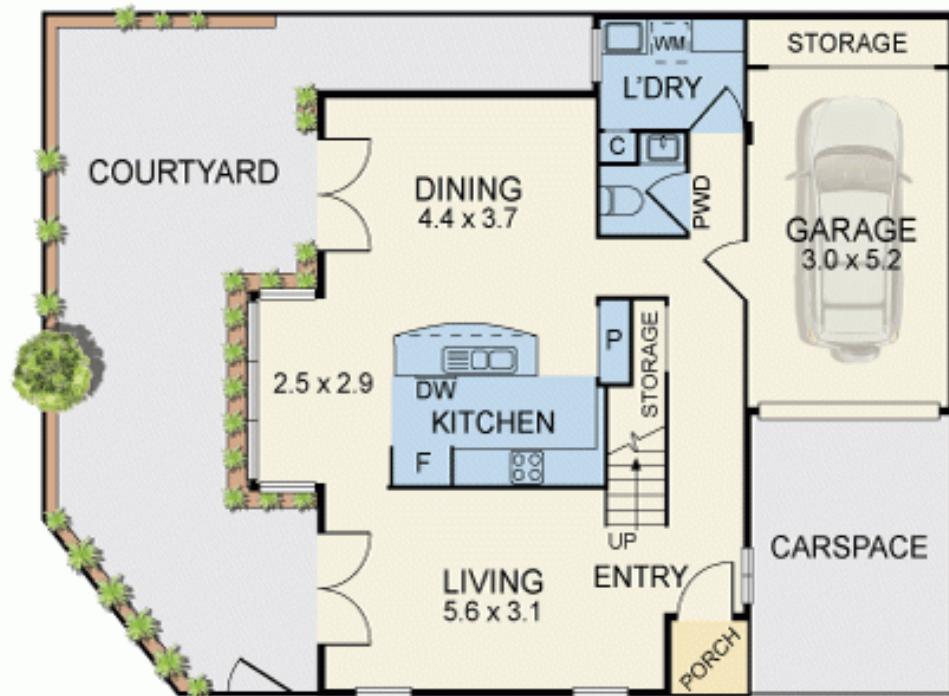


> May Zhu

Phone :0398152999

Mobile :0434441331

Email :may@bekdonrichards.com.au



GROUND FLOOR



FIRST FLOOR



Disclaimer: The artist impressions and floorplans are indicative only, are not to scale and do not form part of any Contract of Sale. Any dimensions, finishes or specifications depicted are subject to change without notice. Consultants and agents do not warrant the accuracy of any information provided and do not accept any liability for negligence, any error, misrepresentation, discrepancy in the information or reliance thereon.