



Elegant Contemporary Family Entertainer

4 2 2

Boasting immense street presence, this charismatic single level weatherboard home has been newly constructed with impeccable finishes throughout, presenting impressive open plan living and entertaining spaces. Set behind a white picket fence and meticulously landscaped gardens and lawn, the home is ideally located in a peaceful family neighbourhood within easy walking distance of Dandenong Creek Trail, Marlborough Primary School and Heathmont College, just moments from Heathmont Station, Heathmont Reserve and local village shopping and cafes.



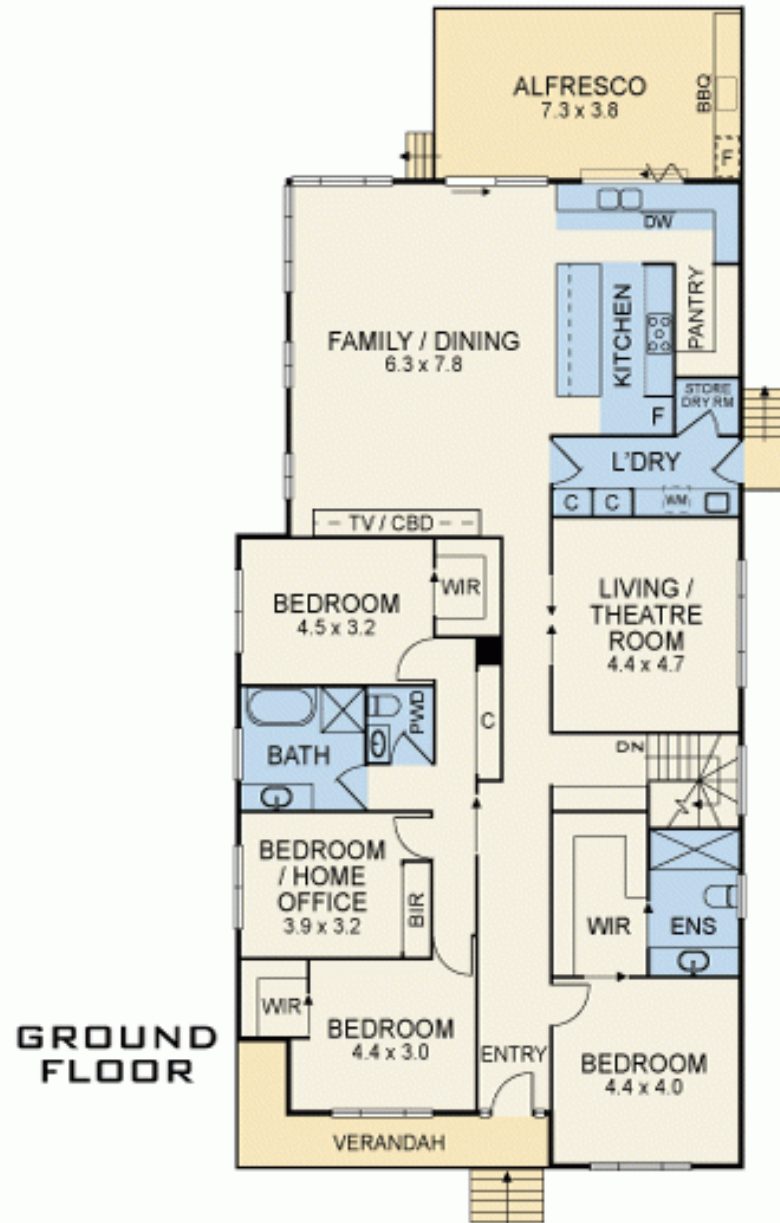
> Paul Richards

Phone :0398152999

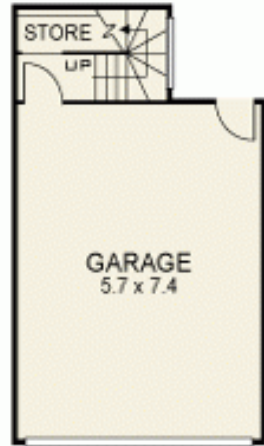
Mobile :0414503324

Email :paul@bekdonrichards.com.au

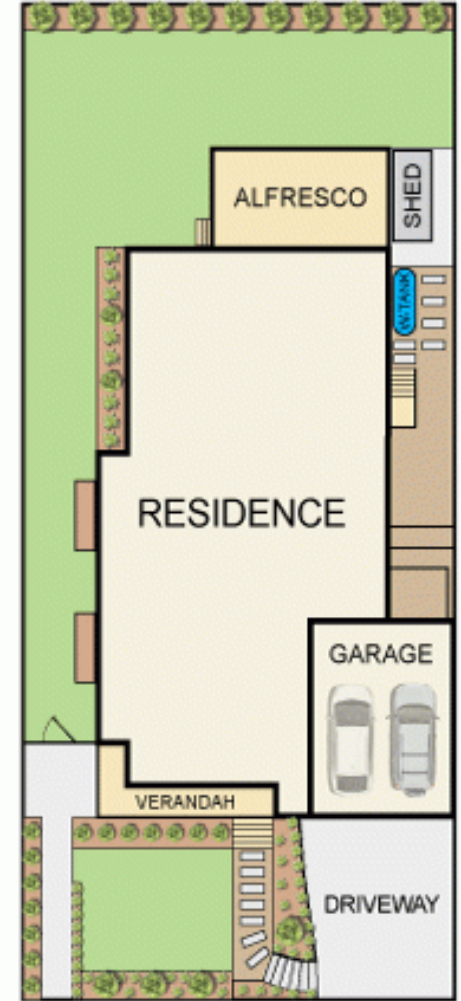
19 Eden Avenue



GROUND FLOOR



LOWER GROUND FLOOR



Disclaimer: The artist impressions and floorplans are indicative only, are not to scale and do not form part of any Contract of Sale. Any dimensions, finishes or specifications depicted are subject to change without notice. Consultants and agents do not warrant the accuracy of any information provided and do not accept any liability for negligence, any error, misrepresentation, discrepancy in the information or reliance thereon.