



Expressions of Interest closing Wednesday 31st March 5:00pm - Scotch Hill lifestyle with city views

Positioned within Hazeldene Court amidst impeccably landscaped garden grounds, this sun drenched open plan apartment showcases breathtaking elevated panoramic views of Melbourne's skyline. In an exceptionally convenient location with trams on its doorstep, and just a short stroll from local cafes and IGA shopping, the apartment is also within walking distance of Fairview Park, Glenferrie Station, Swinburne, and Glenferrie Road shopping and dining.

Flooded with natural light via two walls of windows, an open plan living and dining area showcases breathtaking elevated panoramic views of Melbourne and the city skyline, and opens directly out to a north facing undercover balcony. A light filled

6/510 Glenferrie Road

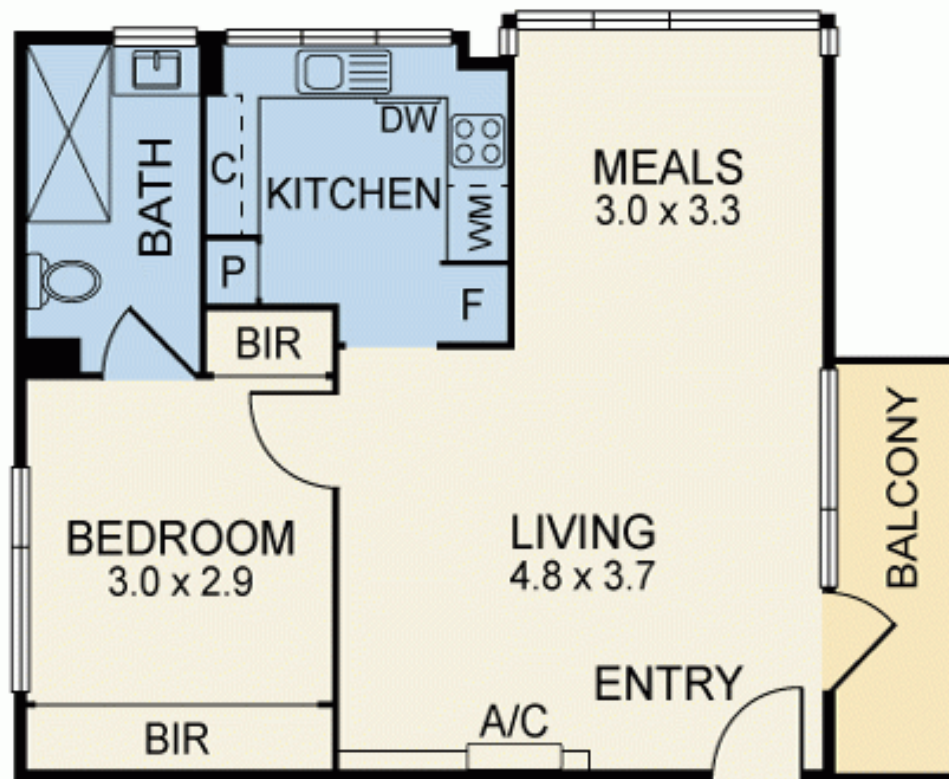


> Paul Richards

Phone :0398152999

Mobile :0414503324

Email :paul@bekdonrichards.com.au



Disclaimer: The artist impressions and floorplans are indicative only, are not to scale and do not form part of any Contract of Sale. Any dimensions, finishes or specifications depicted are subject to change without notice. Consultants and agents do not warrant the accuracy of any information provided and do not accept any liability for negligence, any error, misrepresentation, discrepancy in the information or reliance thereon.

6/510 GLENFERRIE ROAD, HAWTHORN

BEKDON RICHARDS