



## Elegant period residence with contemporary grace

5 3 2

Set amidst an enchanting established cottage garden, this charismatic five bedroom weatherboard family home is nestled in the leafy heart of Surrey Hills, just moments from Wattle Park, Surrey Hills Station and trams. On a sprawling 819sqm block, the residence showcases charming original period features including lofty high ceilings, ornamental cornices and leadlight windows, complemented by a meticulous contemporary renovation.

Awash with abundant natural light, a formal open plan living and dining room features an ornate wood fireplace and flows through to a separate zoned casual living area. The generous living space and kitchen open directly out with two full walls of bifold doors to an expansive elevated alfresco area and sun deck, seamlessly integrating impressive indoor and outdoor living spaces for effortless year-round entertaining.



> Paul Richards

Phone :0398152999

Mobile :0414503324

Email :paul@bekdonrichards.com.au

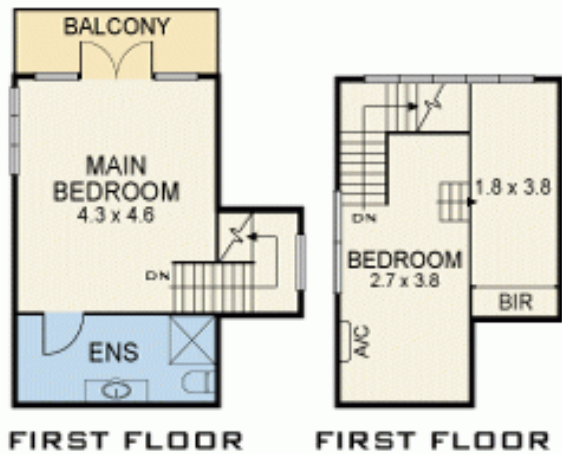
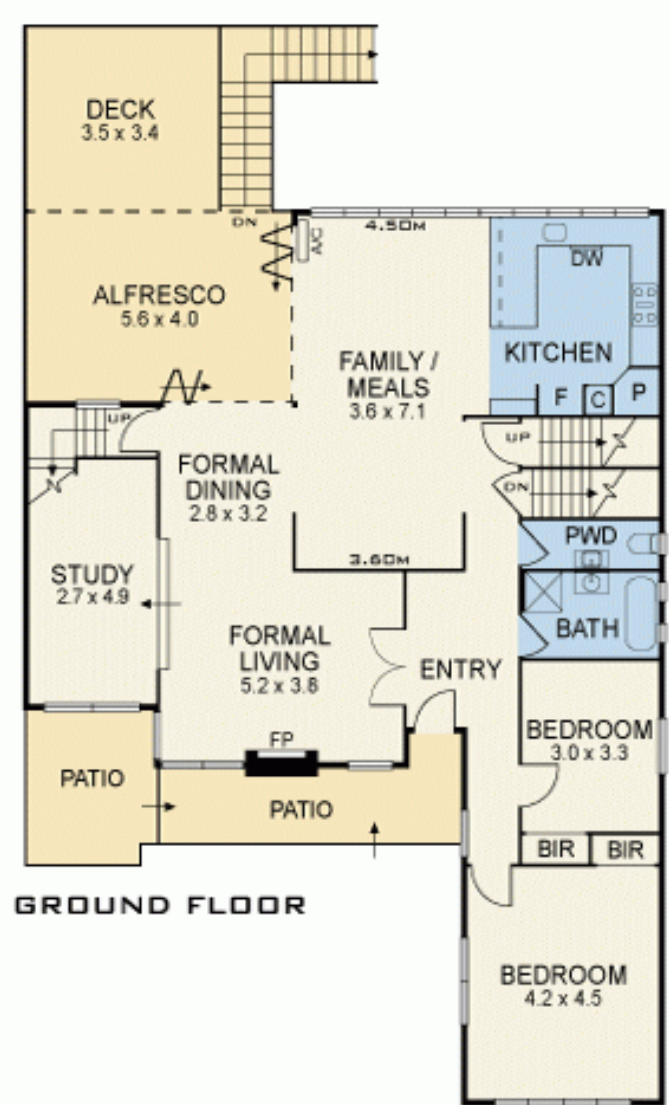


> May Zhu

Phone :0398152999

Mobile :0434441331

Email :may@bekdonrichards.com.au



Disclaimer: The artist impressions and floorplans are indicative only, are not to scale and do not form part of any Contract of Sale. Any dimensions, finishes or specifications depicted are subject to change without notice. Consultants and agents do not warrant the accuracy of any information provided and do not accept any liability for negligence, any error, misrepresentation, discrepancy in the information or reliance thereon.