



## Coppin Court - Art Deco charm just steps to the delights of Hawthorn

2 1

Just a stone's throw to the Yarra River and the surrounding picturesque parklands, this charming Art Deco 2 bedroom ground floor apartment is a period delight, located in this prized Hawthorn location with the best of inner Melbourne at your doorstep.

Timber floors and classic ceiling roses and cornices combine with modern upgrades to create an apartment that is the best of both worlds. Living highlights include a spacious living room with tranquil outlook, an elegant dining room with servery access to the modern kitchen containing timber benchtops, stainless steel appliances and gas cooktop; two spacious bedrooms including the large main bedroom with BIR storage, well-appointed bathroom with separate toilet, ducted heating, gas hot water, security doors, shared storage room, and paved outdoor 1/9 Coppin Grove



> Paul Richards

Phone :0398152999

Mobile :0414503324

Email :paul@bekdonrichards.com.au

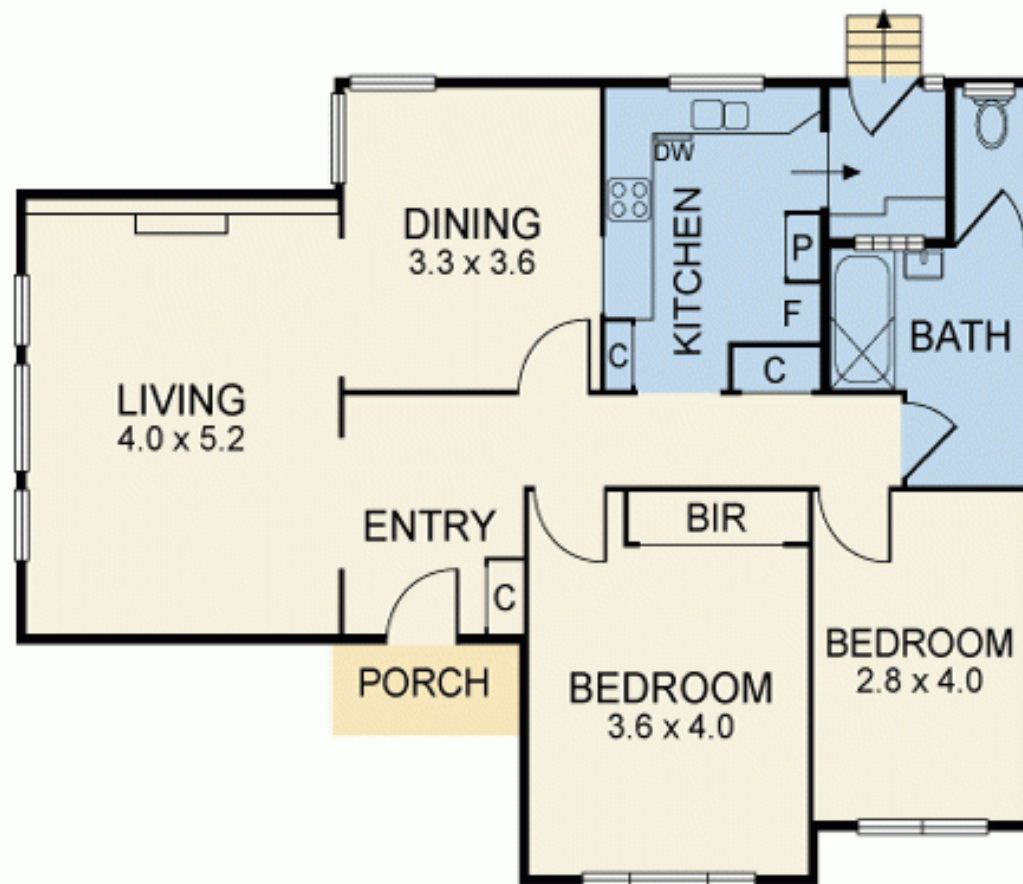


> Shannon O'Garey

Phone :0398152999

Mobile :0434557505

Email :shannon@bekdonrichards.com.au



Disclaimer: The artist impressions and floorplans are indicative only, are not to scale and do not form part of any Contract of Sale. Any dimensions, finishes or specifications depicted are subject to change without notice. Consultants and agents do not warrant the accuracy of any information provided and do not accept any liability for negligence, any error, misrepresentation, discrepancy in the information or reliance thereon.