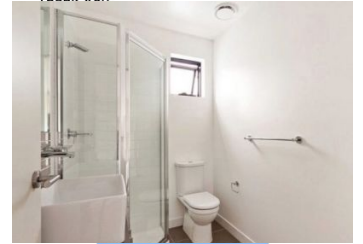




Due to stage 4 restrictions placed by the government in relation to COVID-19 we are conducting video tours **ONLY**

Please feel free to contact us if you have any questions regarding this property.  
Thank You



## Greatly Located Two Bedroom Apartment

2 1

This bright and spacious two bedroom apartment is located on a very convenient and quiet place on Little Lonsdale Street, which offers you everything near your door step: public transports, Melbourne Central, QV, Emporium, Queen Victoria Market, universities and colleges, café and restaurants. Property features;

- Corner apartment
- Sizeable living lounge
- Open plan kitchen with stainless steel appliances
- Spacious bedroom
- Private balcony

1805/380 Little Lonsdale St

> Vanessa Dell'Arciprete

Phone :0499017786

Mobile :0499 017 786

Email :rentals@bekdonrichards.com.au