



Landmark Residential Opportunity

3 2 2

Positioned within the prestigious Collection XI boutique development, secluded amidst tranquil Jack Merlo gardens, this impressive contemporary town residence showcases impeccably elegant design and unsurpassed designer finishes throughout, seamlessly integrating enviable indoor and outdoor spaces for effortlessly stylish year-round entertaining. Set within a peaceful tree-lined street in the leafy heart of Melbourne's esteemed eastern suburbs, the tri-level home is serviced by a private internal elevator, and is set just a short stroll from trams and village shopping, close to several of Melbourne's finest independent and local educational institutions.

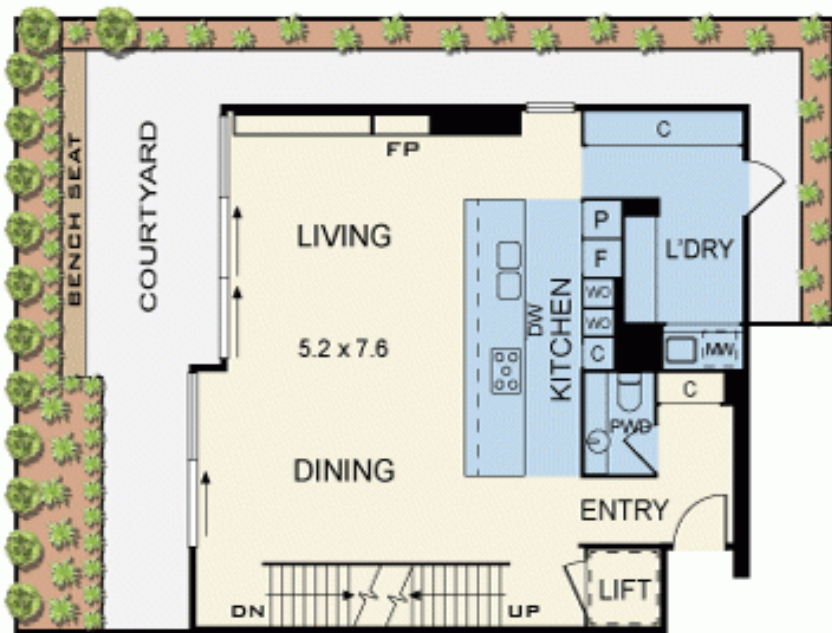
10/11 Mowbray Street



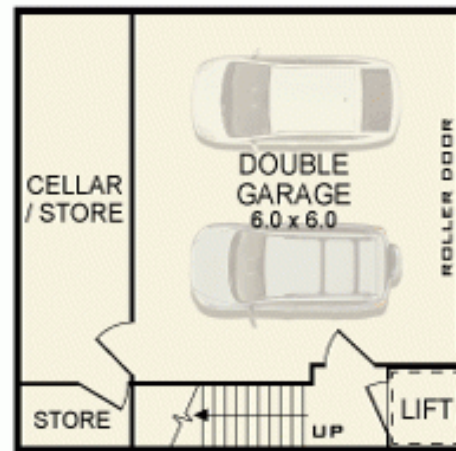
John Ke

Mobile :0410888737

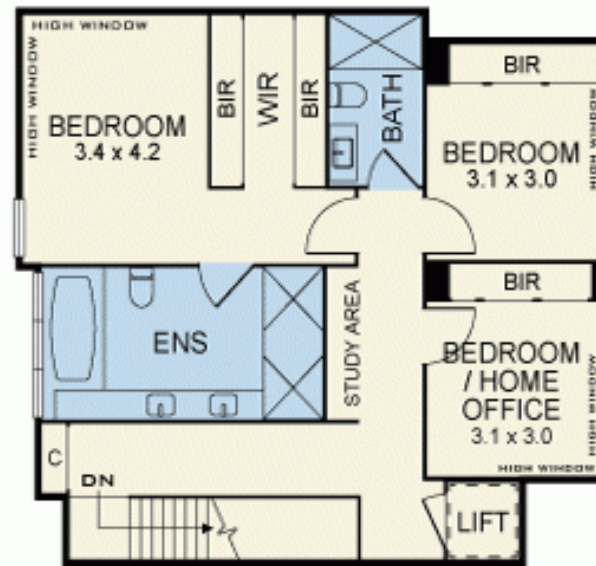
Email :john@bekdonrichards.com.au



GROUND FLOOR



BASEMENT



FIRST FLOOR



Disclaimer: The artist impressions and floorplans are indicative only, are not to scale and do not form part of any Contract of Sale. Any dimensions, finishes or specifications depicted are subject to change without notice. Consultants and agents do not warrant the accuracy of any information provided and do not accept any liability for negligence, any error, misrepresentation, discrepancy in the information or reliance thereon.