



Yarraside bliss with a breathtaking private courtyard garden

2 2 2

With an expansive and utterly breathtaking courtyard and garden which is rare to find in apartment living, and matched by generous proportions inside and standout quality, this memorable 2 bedroom, 2 bathroom ground floor residence is one of the shining jewels of the Watermark complex which sits alongside the Yarra River. You will also enjoy direct apartment access to the leafy Warren Road Reserve which will be your vast and picturesque extended back garden.

The enormous and relaxed lounge and dining zone is as open and free-flowing and living areas get, with full windows letting in natural light while also giving you remarkable views and direct access to your private courtyard garden that will never get tiresome.

1/8 Wallen Road



> Paul Richards

Phone :0398152999

Mobile :0414503324

Email :paul@bekdonrichards.com.au

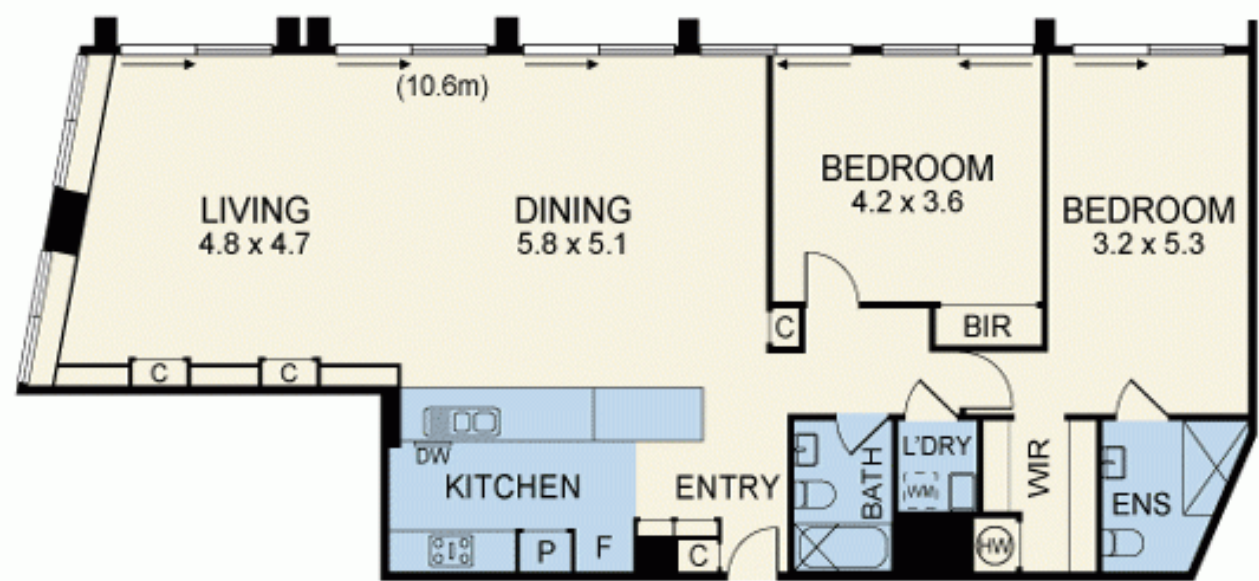
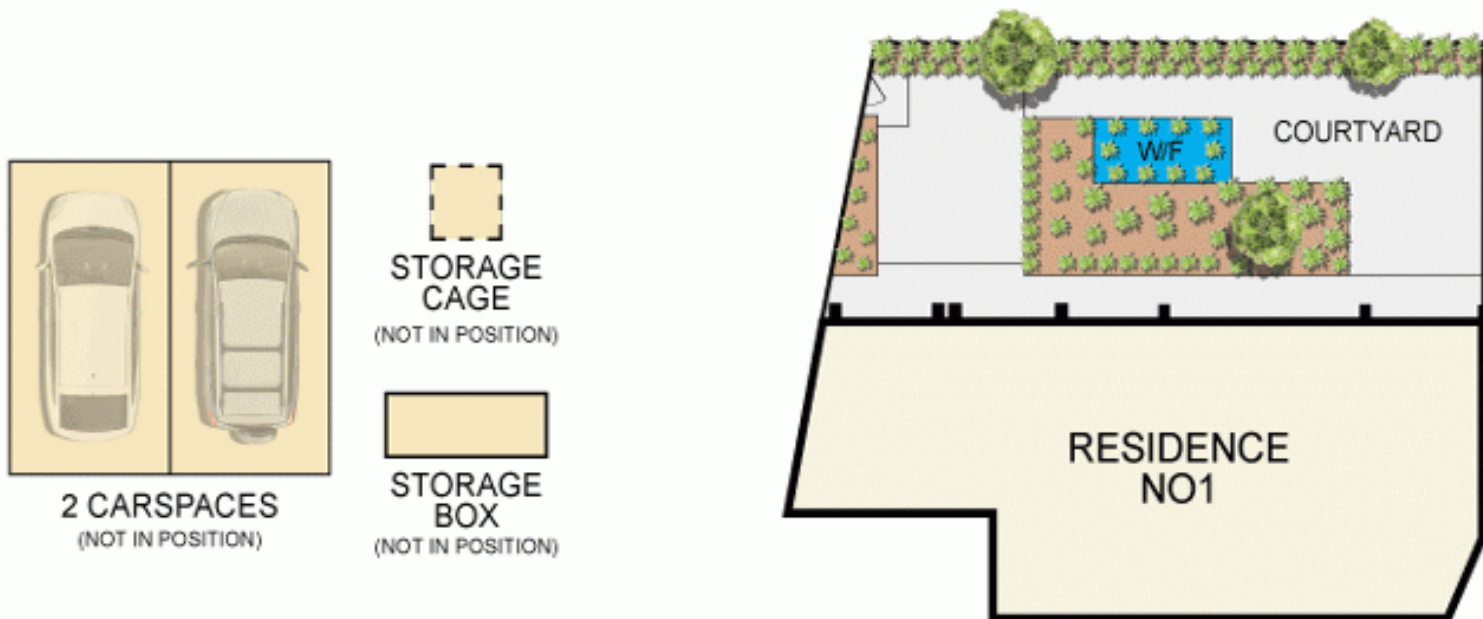


> May Zhu

Phone :0398152999

Mobile :0434441331

Email :may@bekdonrichards.com.au



Disclaimer: The artist impressions and floorplans are indicative only, are not to scale and do not form part of any Contract of Sale. Any dimensions, finishes or specifications depicted are subject to change without notice. Consultants and agents do not warrant the accuracy of any information provided and do not accept any liability for negligence, any error, misrepresentation, discrepancy in the information or reliance thereon.