



A family charmer with mountain views and superb space!

4 2 3

From the low-maintenance yet versatile layout to the inviting entertainer's deck at the rear that promises beautiful mountain views that you will never get tired of, this excellent 4 bedroom, 2 bathroom residence is your Rowville dream come to life just a stone's throw to Alberini Reserve.

Sitting on a large 726 sqm (approx.) allotment with a northern rear, this ready-made single level home ticks all the right boxes. Central living enjoys designated spaces for lounge and dining, while a more casual meals zone has enough space for family activities. The kitchen is a model of modern charm and is part of the family/meals area, and boasts stylish black stone benchtops and stainless steel appliances including a Smeg cooktop and a Samsung dishwasher.

114 Murrindal Drive



> May Zhu

Phone :0398152999

Mobile :0434441331

Email :may@bekdonrichards.com.au

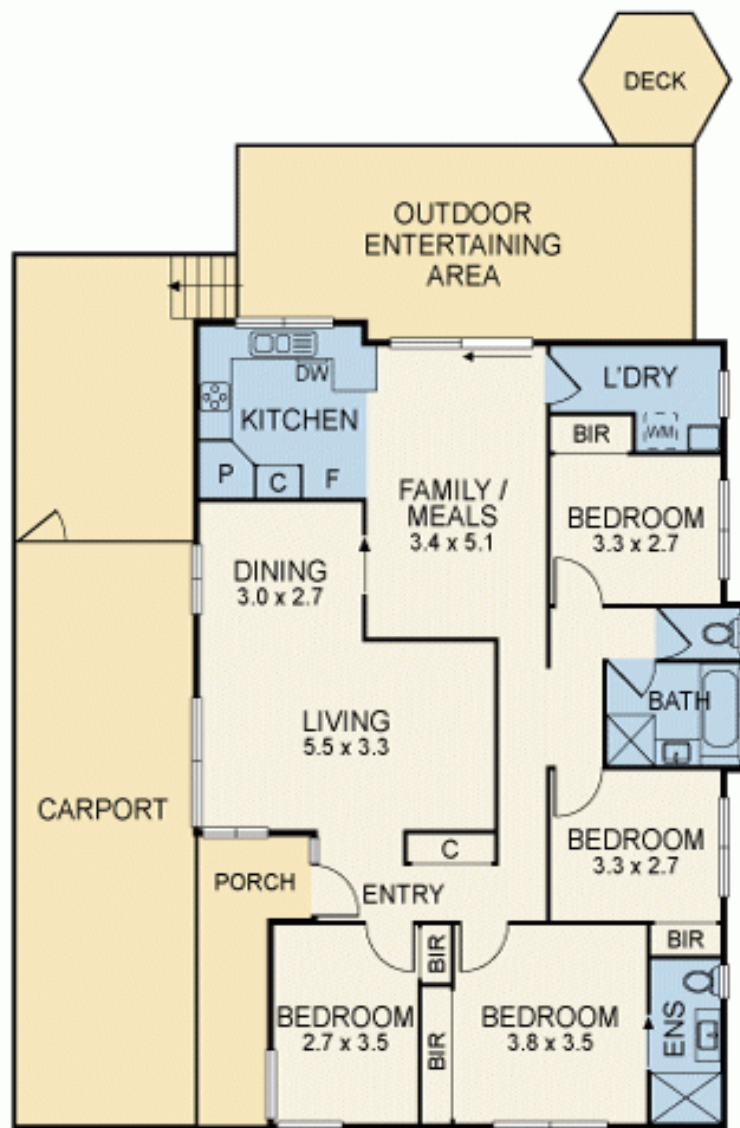


> Paul Richards

Phone :0398152999

Mobile :0414503324

Email :paul@bekdonrichards.com.au



Disclaimer: The artist impressions and floorplans are indicative only, are not to scale and do not form part of any Contract of Sale. Any dimensions, finishes or specifications depicted are subject to change without notice. Consultants and agents do not warrant the accuracy of any information provided and do not accept any liability for negligence, any error, misrepresentation, discrepancy in the information or reliance thereon.

114 MURRINDAL DRIVE, ROWVILLE

BEKDON RICHARDS