



Period grace with contemporary space

3 2 1

Presenting enchanting original period details enhanced by a quality extension, this c.1906 residence showcases charismatic tuckpointed brickwork framed by a leafy established front garden, providing peace and privacy in the heart of Richmond. Just a short stroll from trams and the vibrant Bridge Road and Swan Street café and shopping precincts, walking distance to the City, MCG, Sports and Arts precincts, the home is also mere moments from Burnley Station, Barkly Gardens, Epworth and the M1 freeway.

Boasting soaring high ceilings with ornamental moulding, decorative cornices and gleaming hardwood timber floors, an entry hallway flows through to an open plan living and dining area, flooded with abundant natural light. Two sets of French doors open seamlessly out to an inviting courtyard garden, with a paved dining terrace framed by lush manicured garden beds and an elegant water feature,



> Paul Richards

Phone :03 9815 2999

Mobile :0414 503 324

Email :paul@bekdonrichards.com.au

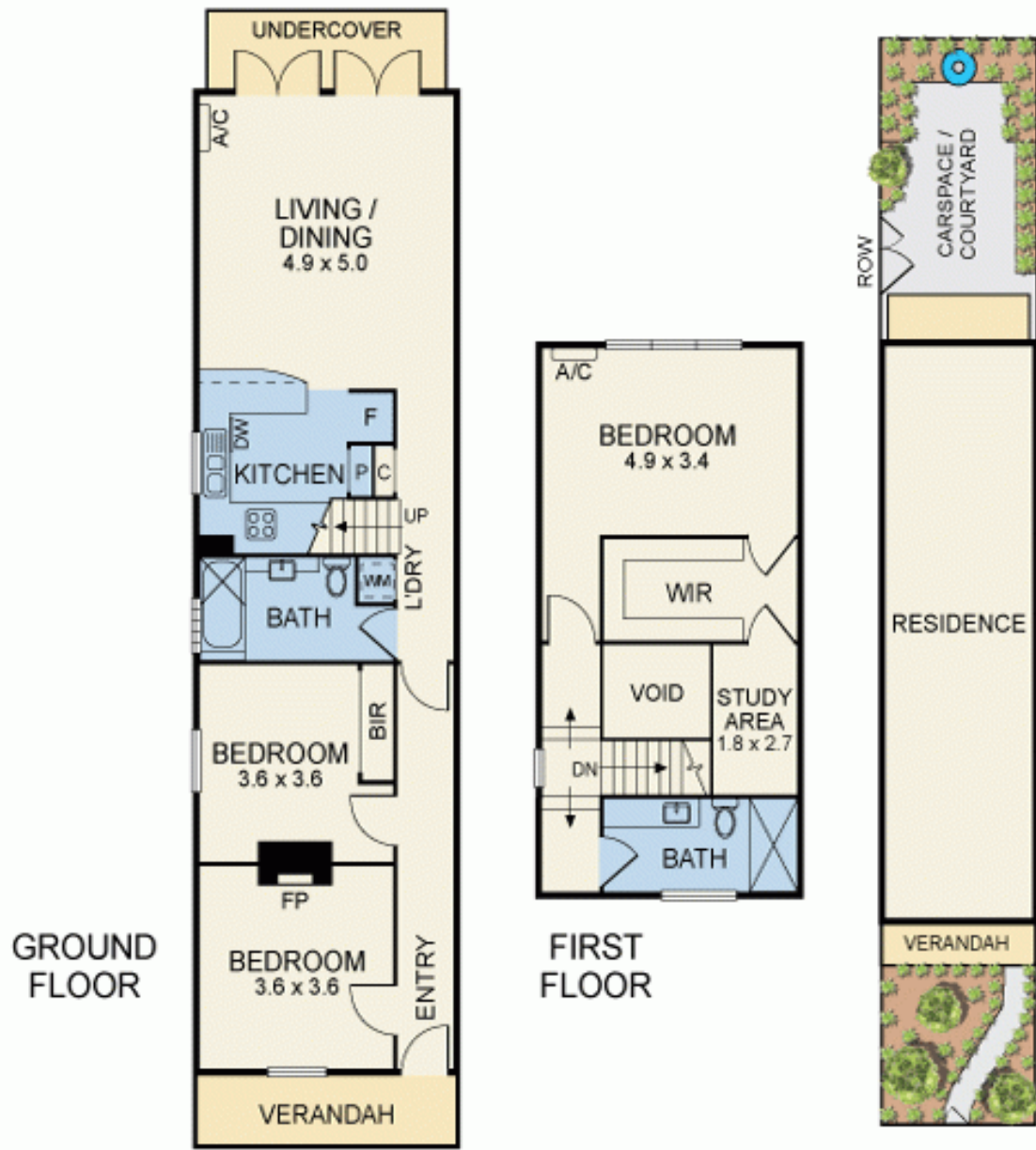


> Shannon O'Garey

Phone :0398152999

Mobile :0434557505

Email :shannon@bekdonrichards.com.au



Disclaimer: The artist impressions and floorplans are indicative only, are not to scale and do not form part of any Contract of Sale. Any dimensions, finishes or specifications depicted are subject to change without notice. Consultants and agents do not warrant the accuracy of any information provided and do not accept any liability for negligence, any error, misrepresentation, discrepancy in the information or reliance thereon.