



Breathtaking bushland views with family floorplan

7 3 2

Enjoying an elevated position directly overlooking Warranwood Reserve native bushland, this spacious brick family residence showcases stylish modern interiors with a generous zoned floorplan, ideal for growing families. Just metres from Jumping Creek trails and Warranwood Reserve Playground, the home is also mere moments from Warranwood Primary School, Melbourne Rudolph Steiner School, Yarra Valley Grammar and Luther Secondary College, and close to McAdams Square, local cafes, restaurants and sporting facilities.

Featuring polished hardwood flooring and soaring lofty ceilings, the home presents expansive open plan living and dining areas, thoughtfully zoned for harmonious family living. Two separate living spaces each boast uninterrupted treetop views, and flow seamlessly out to an elevated 12 Kelly Court



> Paul Richards

Phone :0398152999

Mobile :0414503324

Email :paul@bekdonrichards.com.au

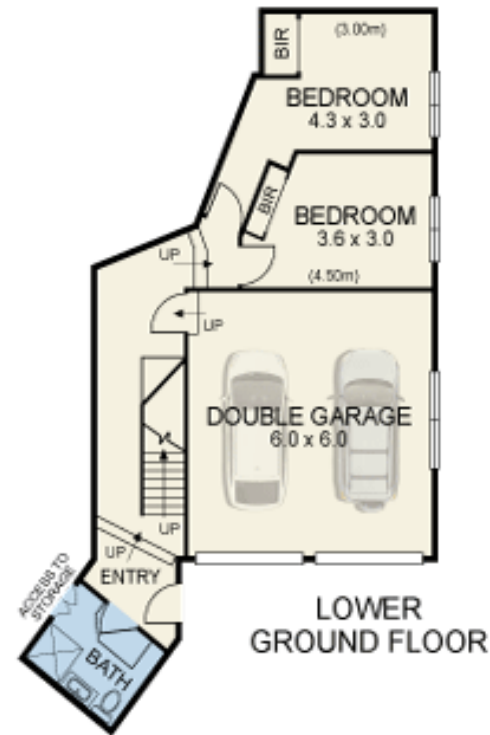
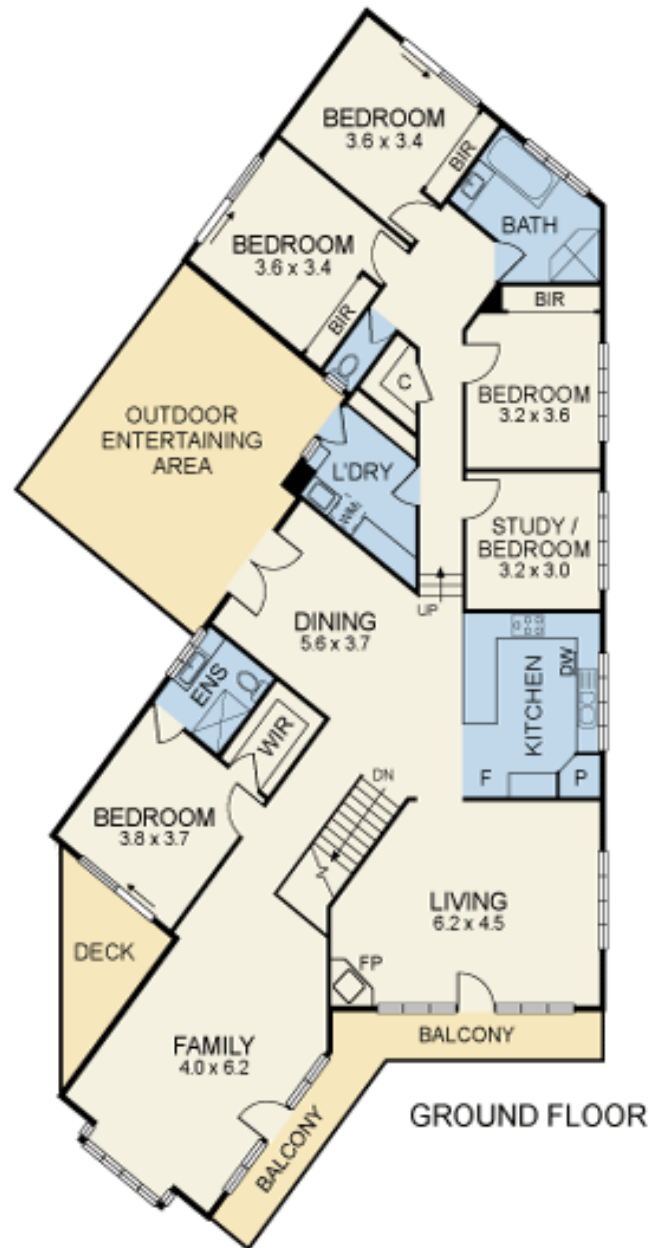


> May Zhu

Phone :0398152999

Mobile :0434441331

Email :may@bekdonrichards.com.au



Disclaimer: The artist impressions and floorplans are indicative only, are not to scale and do not form part of any Contract of Sale. Any dimensions, finishes or specifications depicted are subject to change without notice. Consultants and agents do not warrant the accuracy of any information provided and do not accept any liability for negligence, any error, misrepresentation, discrepancy in the information or reliance thereon.