

Hudson - Strikingly modern and stunningly convenient

1 1 1

Located in the boutique Hudson residential complex which is situated in a desirable Hawthorn East location with everything nearby, this ultra-contemporary 1 bedroom apartment will capture the imagination of first home buyers and those with an investing eye.

This first floor property is highlighted by a spacious lounge and dining zone with arresting timber floors underfoot, straight line stone kitchen with vibrant glass splashback and stainless steel Miele appliances, bedroom with built-in robe storage, quality stone bathroom with sizeable shower, European laundry, heating and cooling, secure intercom, storage cage, and secure car space. There is also a magnificent entertainer's deck to enjoy all year round!

115/81 Riversdale Road

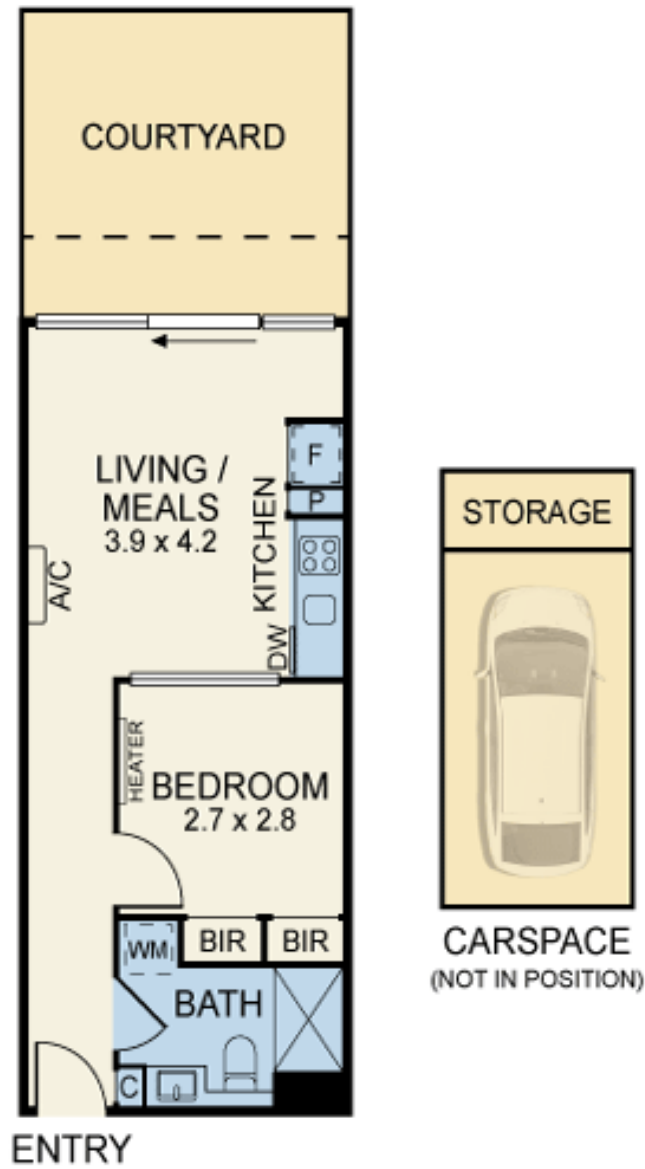


> Paul Richards

Phone :0398152999

Mobile :0414503324

Email :paul@bekdonrichards.com.au



Disclaimer: The artist impressions and floorplans are indicative only, are not to scale and do not form part of any Contract of Sale. Any dimensions, finishes or specifications depicted are subject to change without notice. Consultants and agents do not warrant the accuracy of any information provided and do not accept any liability for negligence, any error, misrepresentation, discrepancy in the information or reliance thereon.

1 15/81 RIVERSDALE ROAD, HAWTHORN

BEKDON RICHARDS