



## Luxurious contemporary lifestyle in exceptional location

2 2 1

Boasting a prestige position within the exclusive Saint Martin residential development, this impeccably presented luxury apartment residence showcases exquisite contemporary interiors, complemented by exceptional quality fixtures throughout. Located just a moment's stroll from Greenvale Station and Bay Street boutique shopping, dining and bars, and within walking distance of Elwood beach and the vibrant beachside cafes, the location is also a mere five minute drive to Brighton Beach and the famed Bathing Boxes, and is close to Star of the Sea College, Brighton Grammar School, Wesley College Elsternwick, and quality local schools.

114/116 Martin Street

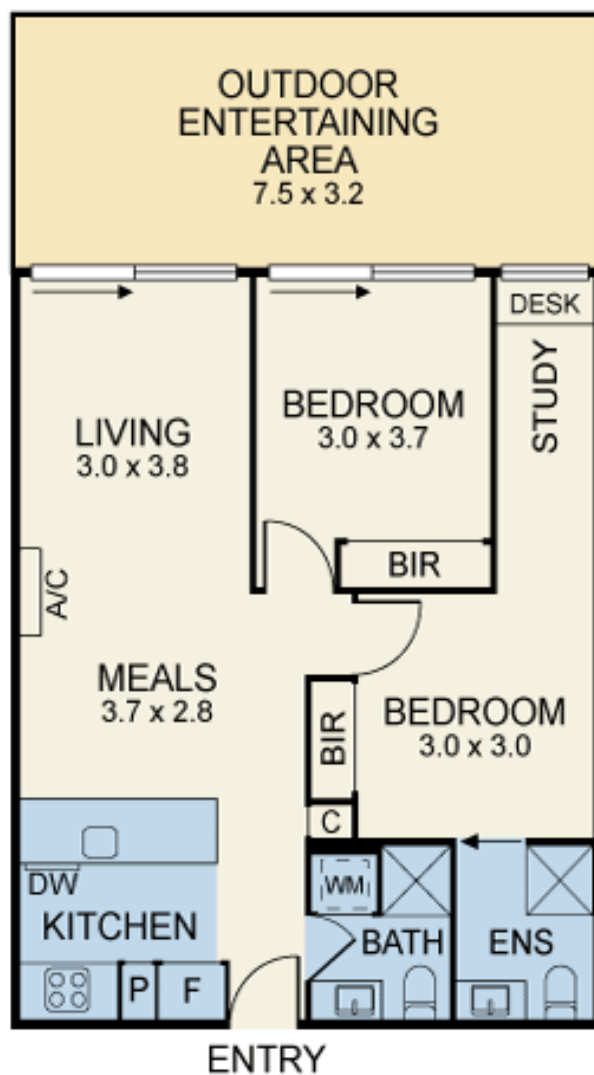


> May Zhu

Phone :0398152999

Mobile :0434441331

Email :may@bekdonrichards.com.au



Disclaimer: The artist impressions and floorplans are indicative only, are not to scale and do not form part of any Contract of Sale. Any dimensions, finishes or specifications depicted are subject to change without notice. Consultants and agents do not warrant the accuracy of any information provided and do not accept any liability for negligence, any error, misrepresentation, discrepancy in the information or reliance thereon.

114/116-120 MARTIN STREET, BRIGHTON

BEKDON RICHARDS