



Spacious, private and secure in leafy Kew locale

2 1 1

Superbly located directly opposite leafy Foley Reserve, and just a short stroll from number 48 and 109 trams and the vibrant Kew Junction shopping and dining precinct, this surprisingly spacious apartment residence is positioned amidst inviting landscaped communal grounds, including raised vegetable gardens and established fruit trees.

Offering a generous light-filled floorplan with exciting scope for further updates, the top floor apartment presents an ideal prospect for first homebuyers, young professionals, or those looking to downsize in a central location.



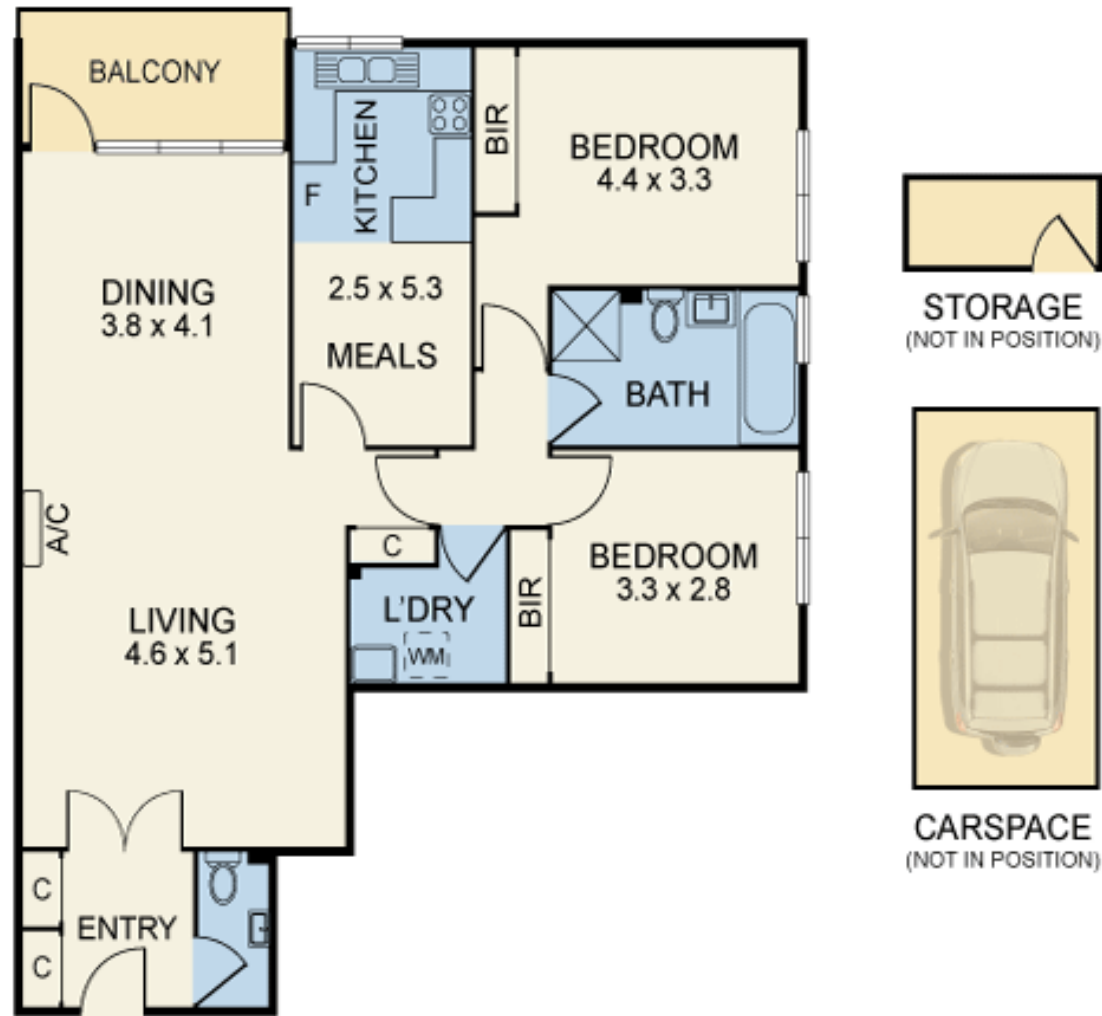
> Paul Richards

Phone :0398152999

Mobile :0414503324

Email :paul@bekdonrichards.com.au

7/12-14 Foley Street



Disclaimer: The artist impressions and floorplans are indicative only, are not to scale and do not form part of any Contract of Sale. Any dimensions, finishes or specifications depicted are subject to change without notice. Consultants and agents do not warrant the accuracy of any information provided and do not accept any liability for negligence, any error, misrepresentation, discrepancy in the information or reliance thereon.