



North-facing ground level living with sky high potential!

2 1 1

With an appealing northerly aspect which allows for sensational natural light, and offering amazing potential for renovators who want to transform this apartment into a sleek and stylish haven, this 2 bedroom ground floor residence is one you simply cannot ignore.

Boasting excellent space and perfectly liveable as is, so much of this home's potential lies in the modern updates you'll adore undertaking. Take advantage of a dedicated entry with built-in storage, bright and sizeable northern living and dining which accesses a well-sized north-facing terrace, private kitchen with retractable table for meals, bedrooms with built-in robes, bathroom with a private toilet and laundry, and undercover car space.

15/596 Riversdale Road



> Paul Richards

Phone :03 9815 2999

Mobile :0414 503 324

Email :paul@bekdonrichards.com.au

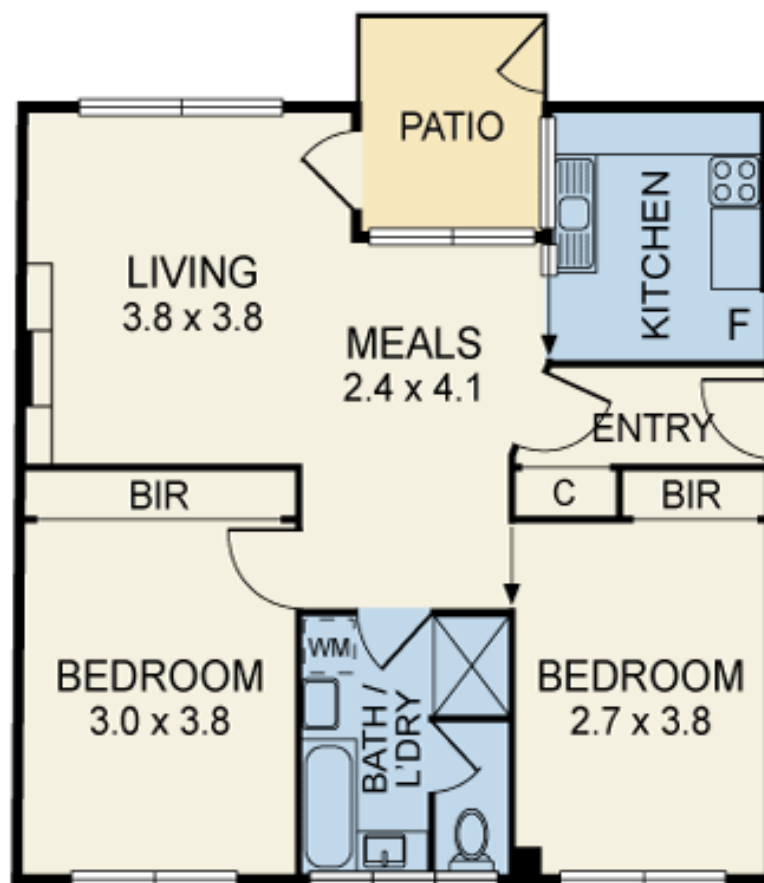


> Shannon O'Garey

Phone :0398152999

Mobile :0434557505

Email :shannon@bekdonrichards.com.au



CARSPACE
(NOT IN POSITION)



Disclaimer: The artist impressions and floorplans are indicative only, are not to scale and do not form part of any Contract of Sale. Any dimensions, finishes or specifications depicted are subject to change without notice. Consultants and agents do not warrant the accuracy of any information provided and do not accept any liability for negligence, any error, misrepresentation, discrepancy in the information or reliance thereon.

15/596 RIVERSDALE ROAD, CAMBERWELL

BEKDON RICHARDS