



King of the Court with ideal family lifestyle

4  3  3 

Family favourite, quiet cul-de-sac living and stunningly positioned including the coveted Canterbury Girls zone, this bright and spacious home with extensive storage boasts a tranquil lifestyle while enjoying all the conveniences that this Camberwell location provides.

Situated in the King's position in the court, this renovated solid brick 4 bedroom, 3 bathroom home sensation is your residential destiny. Surrounded by a myriad of amazing parklands including Wattle Park and easy walking distance to boutique shops, cafes, IGA, bakery, and pharmacy, as well as the South Surrey parklands nature trails, it's a lifestyle easy to get accustomed to.

8A Kingfield Court

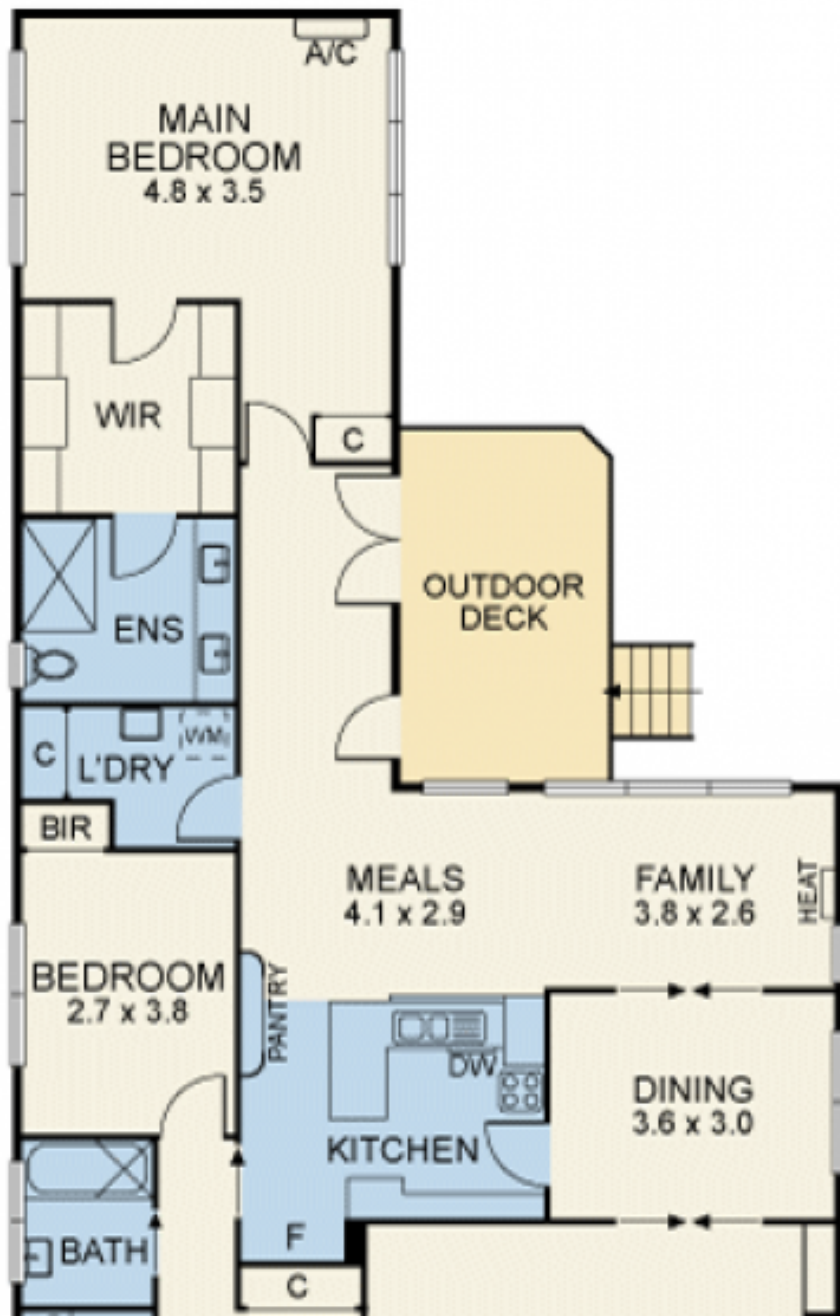


> Paul Richards

Phone :03 9815 2999

Mobile :0414 503 324

Email :paul@bekdonrichards.com.au



(NOT IN POSITION)

