



## Sierra - Exquisite new living in the heart of Hawthorn

3 2 2

Elevating the standard of apartment living in Melbourne's inner-east with unmatched quality, sublime contemporary flair, and an undeniable location just a stone's throw to the bustling Glenferrie Road, the luxurious Sierra residential complex is destined to become your new home.

On offer here is your chance to snap a 3 bedroom apartments in the high end building, which has been designed by the award-winning Rothelowman architects. Each of these magnificent apartments promise a range of highlights, including sublime timber floors, open plan living and dining, exceptional stone kitchen with soft-closer drawers, integrated Siemens fridge and freezer, and full Siemens appliances, bedrooms with wonderful storage options, gorgeous bathrooms and ensuites with rain showers, European laundry, ducted  
612D/1 Drill Street



> May Zhu

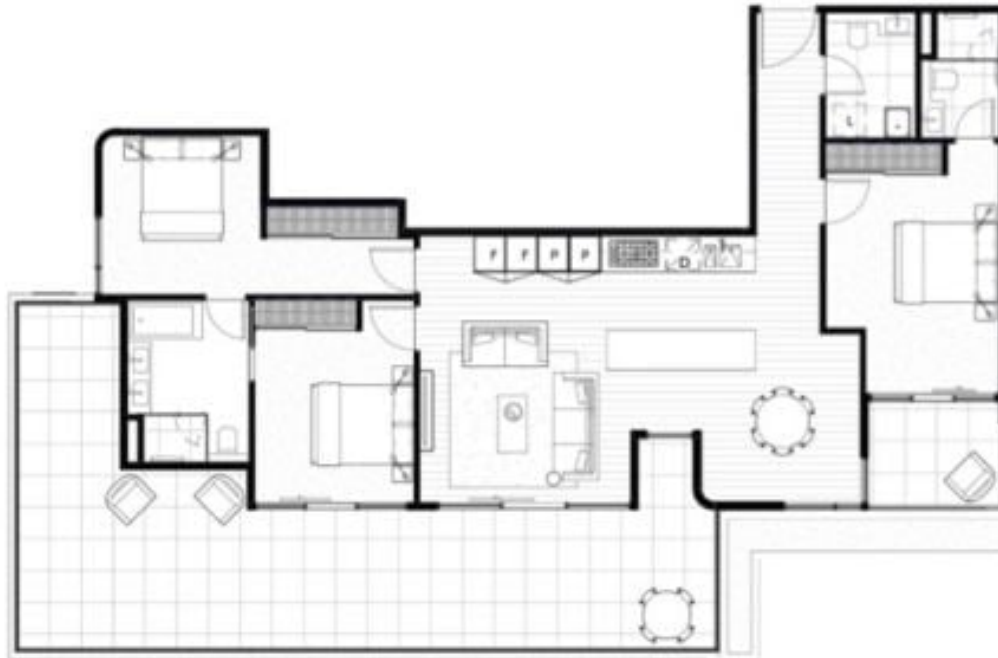
Phone :0398152999

Mobile :0434441331

Email :may@bekdonrichards.com.au

# SIERRA

Hawthorn

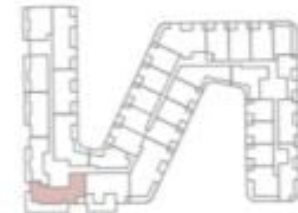


## Apartment 612

Bedroom	3	Carpark	2
Bathroom	2	Internal Area	108sqm
Powder Room	1	External Area	52sqm
Study	0	Total Area	160sqm

**Disclaimer:** On the request of JG Group, air-conditioner units located on balconies are not shown on marketing drawings. Purchasers to review location of site for air-conditioner condenser unit size and location. Review note that the Architecture plans were produced prior to completion of construction and site suitability only. Changes may be made during construction. Dimensions, fixings, finishes and specifications are subject to change without notice in accordance with the provisions of the Contract of Sale. Any furniture depicted is not included with any sale and should not be taken to indicate the final position of power points, TV connection points and the like. Purchasers must rely on their own enquiries. Plans and booklets necessary for services and structure are not depicted.

Floor 6



DRG 17

SIERRA 6