



## Tree-top Views & Supreme Convenience

2 2 1

A stone's throw from Eastland shopping centre for daily needs and Eastlink for daily convenience - this stylishly appointed 2-bedroom apartment is the perfect choice when it comes to a carefree lock & leave lifestyle.

Nestled on the top floor of the Ne1son development - a secure, contemporary & highly sought-after residential enclave - the apartment is both rent and move-in-ready.

Among its standout features are an open plan living/dining zone and tree-top view balcony along with a sophisticated gourmet kitchen with stone surfaces and premium Smeg appliances, including gas cooking.

403b/1 Nelson Street



> May Zhu

Phone :03 9815 2999

Mobile :0434 441 331

Email :may@bekdonrichards.com.au



> Paul Richards

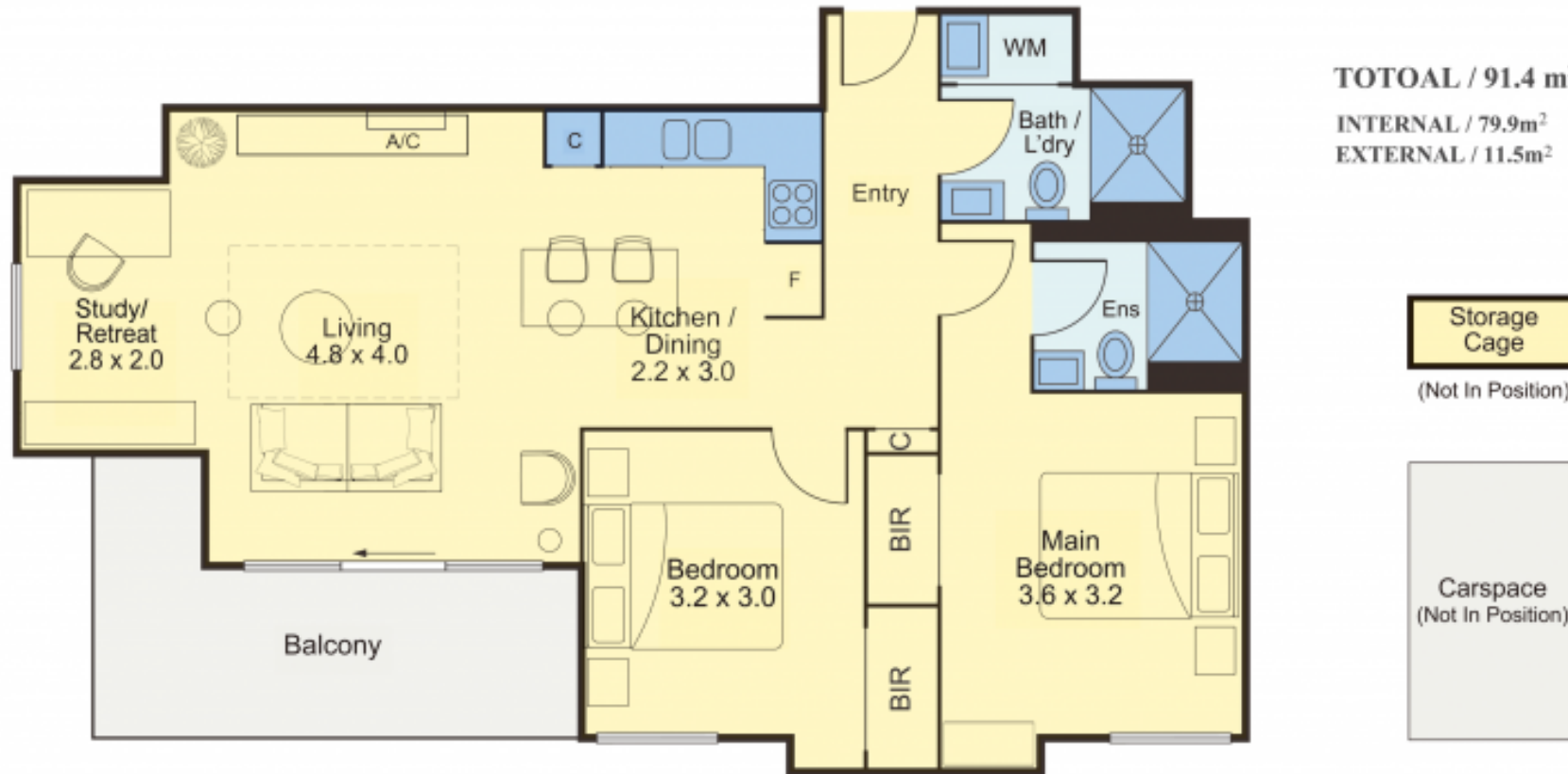
Phone :03 9815 2999

Mobile :0414 503 324

Email :paul@bekdonrichards.com.au

**TWO BEDROOM  
TWO BATHROOM  
ONE CARPARK**

**TOTAL / 91.4 m<sup>2</sup>  
INTERNAL / 79.9m<sup>2</sup>  
EXTERNAL / 11.5m<sup>2</sup>**



403 b/1 Nelson Street, Ringwood

