



Light-Filled Luxe Between the Park & Square!

3 3 2

At the rear of a boutique group of contemporary townhouses and capitalising on its northerly orientation, this light-filled property will excite anyone hunting for sparkling turnkey accommodation in a sought-after neighbourhood. Offering the space needed by busy young families, it presents downsizers with the floorplan they want, while also giving investors a hassle-free opportunity.

Private and peaceful, the accommodation is given a chic aesthetic with oak flooring flowing from the entrance to the open plan living and dining area. Flooded with sunshine, this space connects the sleek stone kitchen boasting plenty of cupboard space and premium Smeg appliances with the north-facing deck and wraparound garden.

3/15-17 Sherman Street



> May Zhu

Phone :03 9815 2999

Mobile :0434 441 331

Email :may@bekdonrichards.com.au

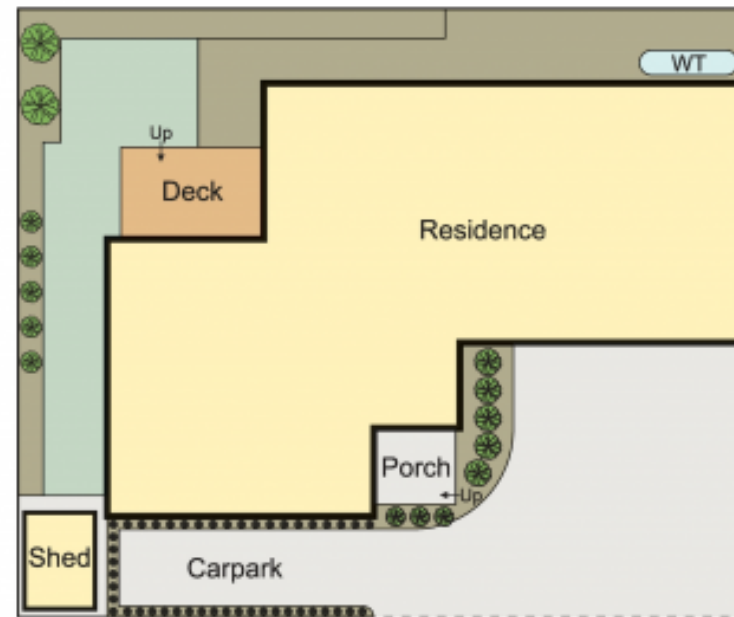
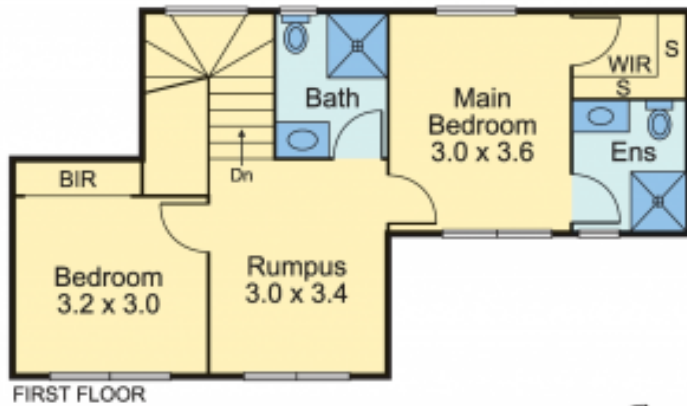


> Paul Richards

Phone :03 9815 2999

Mobile :0414 503 324

Email :paul@bekdonrichards.com.au



3/15-17 Sherman Street, Forest Hill